

A modern office interior featuring a patterned carpet in shades of green and grey. A glass partition wall separates a workspace with white desks and orange chairs from a lounge area with a white circular table and orange chairs. A purple graphic overlay is in the top right corner.

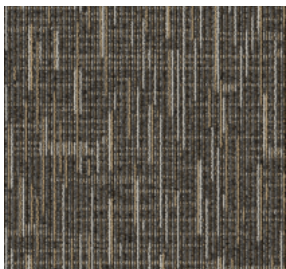
VICTORY



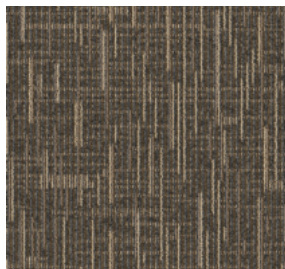
<b>CONSTRUCTION</b>	LOOP
<b>PILE FIBER COMPOSITION</b>	100% Olefin
<b>YARN TYPE</b>	BCF
<b>DYE METHOD</b>	Solution Dyed
<b>PILE WEIGHT</b>	750g/m <sup>2</sup>
<b>NUMBER OF TUFTS</b>	229100/m <sup>2</sup>
<b>TUFTING GAUGE</b>	1/10"
<b>PRIMARY BACKING</b>	Non-Woven
<b>SECONDARY BACKING</b>	Stable Shield - 100% Vinyl
<b>OPTIONAL BACKING</b>	Recova-PU Cushion , EcoShield-100% Recycled Vinyl
<b>TILE SIZE</b>	50 cm x 50 cm (19.6 in x 19.6 in)
<b>PILE HEIGHT</b>	2.5 mm / 5.5 mm
<b>TOTAL HEIGHT</b>	8.00 mm
<b>PILE TREATMENT</b>	INVISTA Anti-Soil Treatment, Anti-Microbial (optional)
<b>RECOMMENDED INSTALLATION</b>	Quarter Turn or Brick

# SPECIFICATIONS

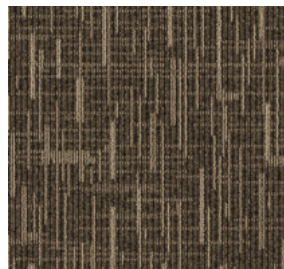
# COLOURLINE



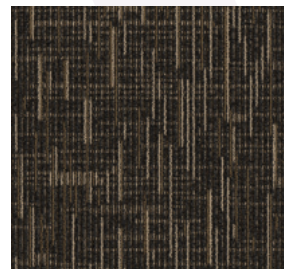
Victory - 745



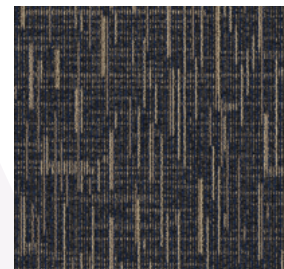
Victory - 746



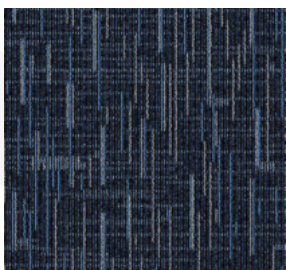
Victory - 747



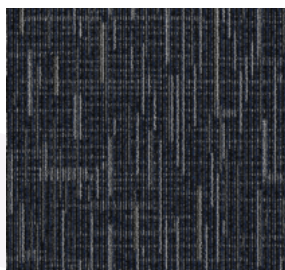
Victory - 748



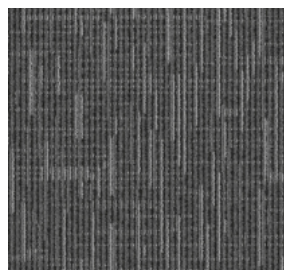
Victory - 755



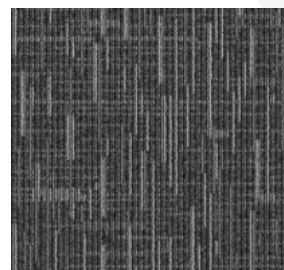
Victory - 756



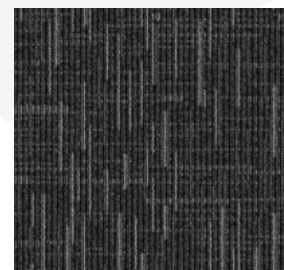
Victory - 758



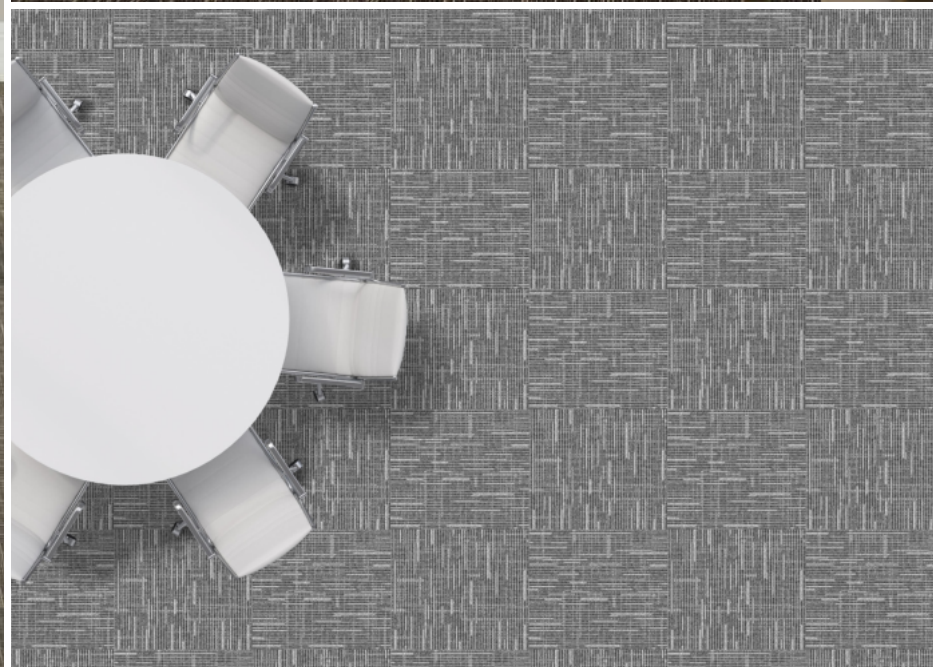
Victory - 775



Victory - 777



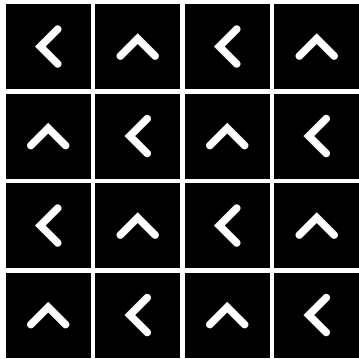
Victory - 778



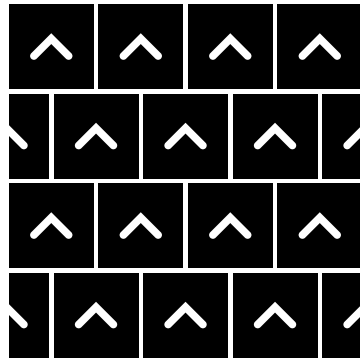


# HOW TO INSTALL

**QUARTER TURN**



**BRICK**





Standard  
*CARPETS*

[www.standardcarpets.com](http://www.standardcarpets.com)